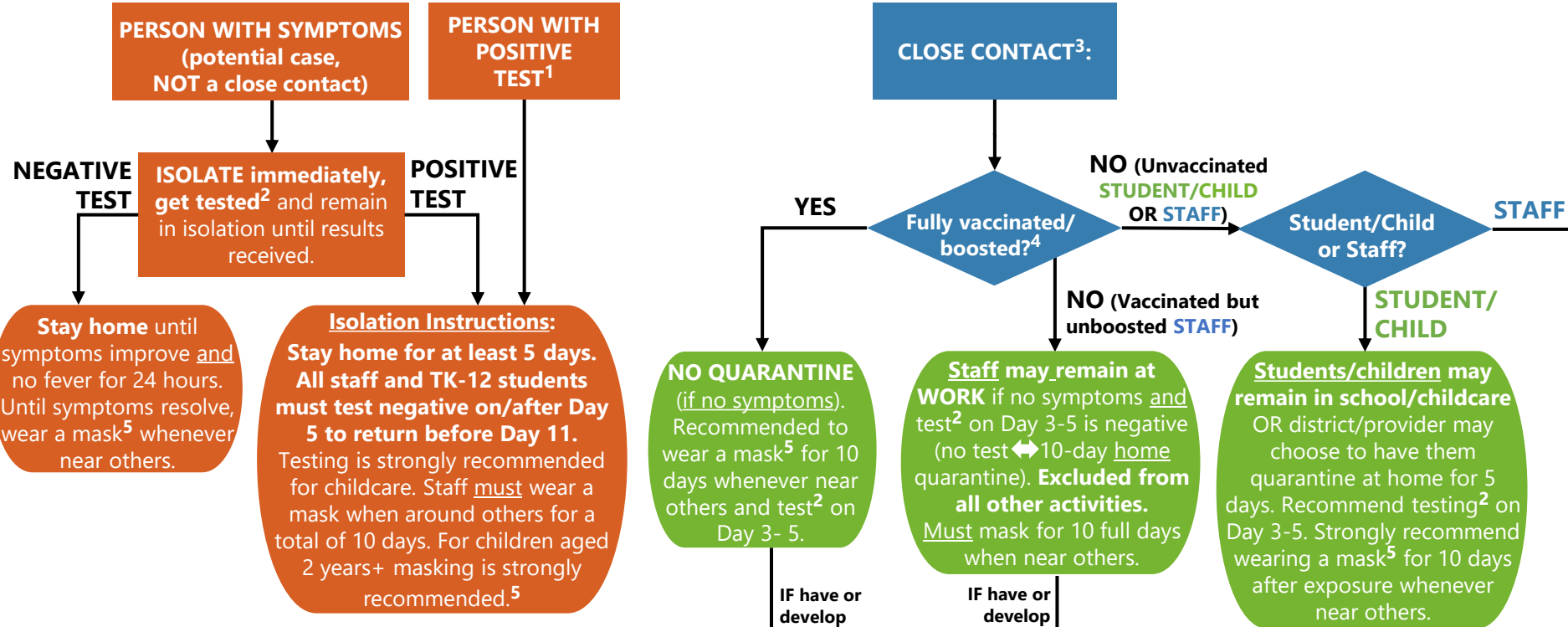


COVID-19 DECISION TREE – TK-12 & CHILDCARE (4.06.22) to Determine Isolation or Quarantine for Staff & Children



1. ANYTIME a test is **positive** (regardless of vaccination status or absence of symptoms), **isolate at home** follow the **ORANGE** tree.
2. All FDA-approved COVID tests can be used for diagnosis or to end isolation/quarantine. (Antigen preferred to end isolation.) **Staff** at-home tests must be proctored by employer or telehealth provider.
3. **Close contact**= <6 feet from a *confirmed case* for ≥15 minutes (can be multiple short-duration exposures over a 24-hour period), beginning 2 days before the case was infectious.
4. **NO**= **Age 18+** who received initial series & are booster-eligible but have **not yet received a booster**; children under 5
YES= Adults boosted or vaccinated but not yet booster eligible (dose too recent); anyone who had COVID-19 within last 90 days;
5. Wearing a mask is **strongly recommended** for those 2 years and older except when eating or sleeping.

